



Belleville News

18 October 2024

Dear Parents and Carers,

We are looking forward to seeing you at Parents' Evening on Wednesday and Thursday next week. A positive and productive relationship between home and school is a vital factor in any child's educational success and your ongoing support and engagement is hugely appreciated.

If you are unable to attend for any reason, please contact your child's class teacher so you can discuss your child's progress after half term.

Have a good weekend,

John Budden
Executive Headteacher

Mary-Lyne Latour
Headteacher

From our SENCOs



October is ADHD Awareness Month, dedicated to promoting understanding of Attention Deficit Hyperactivity Disorder.

We wanted to share [a useful video](#) for adults and children.

More information about ADHD can be found on the [ADHD Foundation website](#).

Dates for your diary:

Remaining Individual and Sibling Photos – Monday 21 October - Webb's Years 3 – 6, 5G and 5K.

Year 6 Djembe Drumming Performance – 6B Meteor Class - Tuesday 22 October, 2.40pm, Meteor Hall.

Parents'/Carers' Evenings - Wednesday 23 and Thursday 24 October, both sites. Reception – Year 6, please check Parent Mail to sign up. Nursery – please use sign-up sheets available in the Nursery.

Belleville PTA Autumn Bake Sale - Friday 25 October, pick up time, both sites.

Sports Survey for Year 2 to Year 6 – The deadline for [completing the survey](#) is Friday 25 October.

Last Day of Autumn Term 1 - Friday 25 October. Children in the winning house, **Northcote House**, can wear their own clothes to school. School pick-up is at the usual time.

Autumn Half Term: Monday 28 October to Friday 1 November.

Inset Day: Monday 4 November. School closed to children.

First day of Autumn Term 2: Tuesday 5 November.

Open Mornings for Prospective Families: Wednesday 6 & Thursday 7 November, 9.15am – 12noon. Families interested in attending can [sign up here](#). To help as a parent volunteer, [please sign up here](#).

Belleville PTA Festive Shopping Evening – Wednesday 20 November, 7.30pm – 9.30pm, Webb's Road. Tickets £7 inc. complimentary Tote bag and mulled wine, now on sale via the [Belleville PTA website](#).

Follow us on social!



@belleville_school



@bellevillesch



@belleville-primary-school



Belleville News

Belleville Open Mornings – Parent/Carer Tour Guides

On **Wednesday 6 and Thursday 7 November 2024**, we will be hosting our open mornings for prospective families considering Belleville School.

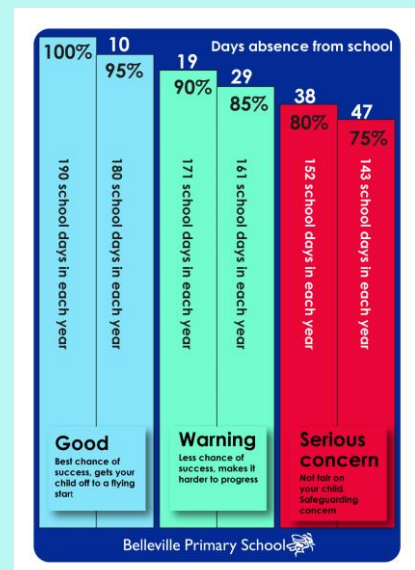
As in previous years, we are looking for parents and carers who are happy to take prospective families on a tour of Belleville School. All volunteers can receive a full briefing session which will be at 9.15am on Monday 21 October (Webb's) and Tuesday 22 October (Meteor), light refreshments, and our gratitude! You can choose to help us on just one of the days, and at either or both school sites. **If you can help, please [sign up here](#). Thank you!**



School Attendance and Punctuality

School attendance is very important to make sure that every child reaches their full potential, not only academically but also socially and emotionally. We expect all children to attend school every day and to be in the playground at the start of the day. Periods of absence and poor punctuality are disruptive to the children's learning and send poor messages about the value of education. We ask parents and carers to support us in ensuring their children do not miss out through unnecessary absences.

We monitor all pupils' attendance and punctuality. Nationally, any child who attends school less than 90% of the time is considered a Persistent Absentee. **As part of our procedures, we will be contacting parents/carers after half term if their child's attendance is below this level to start a conversation about improving your child's attendance and if there is anything we can do to support you.**



If your child is unwell and away from school, please call the School Office on **020 7228 6727** or email enquiries@belleville.q1e.org.uk before 8.30am to let us know. For further information about our attendance expectations, holidays, reporting absence and sickness, [please visit our website](#).

Lateness = Lost Learning

We would also like to remind everyone of the **importance of being on time for the start of school**. Missing the start of lessons can be upsetting and embarrassing for a child to have to walk into a classroom late and on their own.

Did you know that if your child is **5 minutes late** for school each day, they will lose **three days of learning over the course of a school year**? If they are 30 minutes late each day, that rises to 19 days of missed learning! Please can you make sure that your child is on time for school. Thank you.



Belleville News

Year 1 Update

What a busy start to the year it has been in Year 1! In Geography, we recently went on a walk around our local area, keeping a close eye out for human and physical features along Northcote Road. We also bought a fishing rod for our class bear, Fred!



In Science, we have been exploring our five senses. We did an experiment to investigate different flavours, trying lots of exciting things such as chocolate, crisps, rocket, and lemon! This week, we became sound detectives and did a great job identifying familiar sounds.



We have been very busy in Maths! Our Maths friends have kept us on our toes with daily problems to solve. This week, we used the part-whole model to solve equations. Excellent mathematicians always show how they know!

House Winners – Autumn Term 1

Today we announced our winning house for Autumn 1. Congratulations Northcote House. You have won a non-uniform day on Friday 25 October. The House points will now be reset for Autumn 2.

Well done to all the children who have received House Points for demonstrating our [CARE](#) and Excellent Learner values. You should be proud of every point you have earned.





Poésiaert French Competition Winners

Year 4, 5 and 6 had the exciting opportunity to enter a competition called [Poésiaert](#). We studied two French poems in class and they chose one and created a piece of artwork inspired by the poem. Madame Osborn was very impressed with the effort and imagination and Ms Green helped with the difficult task of judging.

The three finalists from each year will be published in an online book and entered into the final against other schools. We will do mini galleries in class next week to look at each other's artwork.

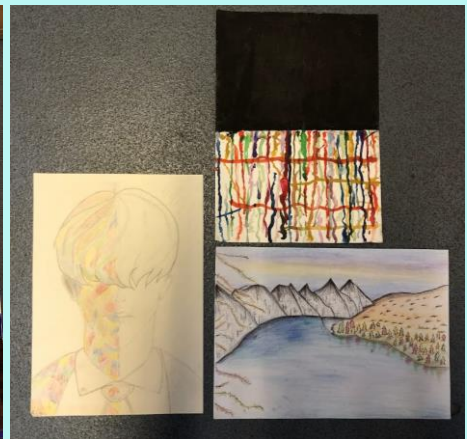
Year 4: Michael 4M, Selcuk 4SP and Sienna 4T, Year 5: Tiago 5OG, Sophie 5K and Lilou 5OG
Year 6: Sveva 6H, Aseanat 6DB and Megan 6B



Year 4



Year 5



Year 6

Dolphin Football Tournament – Pupil Review

"The first match the squad played was against Dolphin School. Belleville Meteor won 2-0. The next school Belleville played was Alleyn's. The result of the match was a draw, nil all. Next up was Rutherford, where Belleville lost 1-0. The last match would decide if Belleville went to the semi-final or not. The last match Belleville played was against Beatrix Potter. Belleville won with a score of 2-1.

This meant that Belleville advanced to the semi-final, to play Fairley House. Each team had played very well so of course it was a draw but both teams couldn't move on to the final only one team was able to. The decider of this was penalties. Sadly, Belleville lost to Fairley House. Belleville came 3rd overall. Our team played great with some excellent saves. Overall, it was a great game and there was great sportsmanship from both teams." Lottie, 6B.

Year 5 Residential to Ufton Court

Year 5 have had a brilliant residential trip to Ufton Court this week. There will be photos and a write-up in next week's newsletter!



Food Waste Collections – Letter from Wandsworth Council

Year 1 wrote some brilliant letters to Wandsworth Council in January regarding reducing food waste and they were delighted to receive this response. We will be talking to the Council about this project.

"Dear Year 1,

Hope you are all well. My name is Emma, and I work for Wandsworth Council in their waste department.

I've just received your amazing letters requesting a food waste bin - WOW! Thank you so much! I really loved reading them all. I was impressed by your thoughtful arguments and the care you show towards our planet. It's true - collecting our food waste separately is a much smarter idea than putting it in rubbish!

I also love your great ideas about reducing the amount of food that gets wasted in the first place, like making a shopping list and sticking to it. We have a saying at the Council - "Reduce, Reuse, Recycle". That means that Reducing our waste is the first thing we should try to do. Can you think of other ways to waste less food?

Many of you are really concerned about wasted food rotting in landfills and releasing methane. In Wandsworth, we don't use landfills - instead, all your rubbish that can't be recycled goes to an "Energy From Waste" plant, which just means that we burn it to create energy that keeps homes warm. But should we really be burning our leftover food, rather than eating or composting it?

*As Khalid said - **we can do better than that!***

*The good news is, over the past year at the Council we've been working really hard behind the scenes on creating a food waste service for all our residents. **Schools are included!** Over the next few months I'll be paying visits to schools who would like to join our special schools' food recycling service. If your school would like to be a part of this, your teacher is very welcome to get back in contact with me.*

Thank you again - I hope you keep recycling!" Emma, Waste Projects Assistant

Year 4 Girls' Football Festival

Some of our Year 4 girls enjoyed a football festival at Southfields Academy last week. They played a variety of games to help develop their ball skills, led by coaches from AFC Wimbledon.



School Streets

We are still looking for volunteers to help with School Streets. Thank you. Meteor Street, please [sign up here](#). Webb's Road, please [sign up here](#).

Job Opportunity – Data Entry Assistant

We are looking for someone to help us with recording our assessment data (QLAs) on specific dates during the school year. To find out more or apply, please [visit our website](#). The closing date is **Monday 21 October at noon**.



Belleville News

Save the date for these PTA events!

Autumn Bake Sale

Friday 25 October, 3.20pm, both school sites.

An evening with Jay Baldwin

Thursday 7 November, 7.30pm, Webb's Road.

A talk about resilience, leadership, and overcoming adversity.

Tickets are £10 and are [available on the PTA website](#).

Festive Shopping Evening

Wednesday 20 November, 7.30-9.30pm, Webb's Road.

Over 30 local businesses selling gifts for your family and friends.

Tickets are £7 including a complimentary Tote bag and mulled wine or non-alcoholic welcome drink on arrival. [Tickets available here](#).

Christmas wreath making - Wednesday 27 November.

Christmas tree sale - Saturday 30 November. Webb's Road.

Christmas Fair - Saturday 7 December. Webb's Road.



Our number one priority is to ensure that all children and adults are safe.

Please talk to any member of staff if you have any worries for yourself or for others in our community.



Term Dates 2024 – 2025 Academic Year

Autumn Term 2024

Inset Days: Monday 2 and Tuesday 3 September - school closed to children

First day of Autumn 1: Wednesday 4 September

Last day of Autumn 1: Friday 25 October

Autumn half term: Monday 28 October to Friday 1 November

Inset Day: Monday 4 November – school closed to children

First day of Autumn 2: Tuesday 5 November

Last day of Autumn 2: Friday 20 December

Spring Term 2025

Inset Day: Monday 6 January – school closed to children

First day of Spring 1: Tuesday 7 January

Last day of Spring 1: Friday 14 February

Spring half term: Monday 17 to Friday 21 February

First day of Spring 2: Monday 24 February

Last day of Spring 2: Friday 4 April

Summer Term 2025

Inset Day: Tuesday 22 April – school closed to children

First day of Summer 1: Wednesday 23 April

Bank holiday: Monday 5 May – school closed

Last day of Summer 1: Friday 23 May

Summer half term: Monday 26 to Friday 30 May

First day of Summer 2: Monday 2 June

Last day of Summer 2: Tuesday 22 July