



Friday 28th February 2020

RE: Coronavirus Update

Dear Parents and Carers,

We wrote to you just before the holidays and on Tuesday about procedures and precautions regarding Coronavirus.

There continues to currently be **no cause for concern at the school.**

We are continuing to closely follow the government guidance and any updates.

There has been a further update from the government issued today, which we have included details of in this letter. The full guidance can be found by following these links:

Guidance for the Public

<https://www.gov.uk/guidance/coronavirus-covid-19-information-for-the-public>

Guidance for Schools

<https://www.gov.uk/government/publications/guidance-to-educational-settings-about-covid-19/guidance-to-educational-settings-about-covid-19>

The symptoms of Coronavirus (COVID-19) are below:

The following symptoms may develop in the 14 days after exposure to someone who has COVID-19 infection:

- cough
- difficulty in breathing
- fever

Recent travel

There are two categories of countries to be aware of if people have travelled there.

Category I travellers should self-isolate immediately and call NHS 111 for advice even if there are no symptoms.

The locations in Category I are:

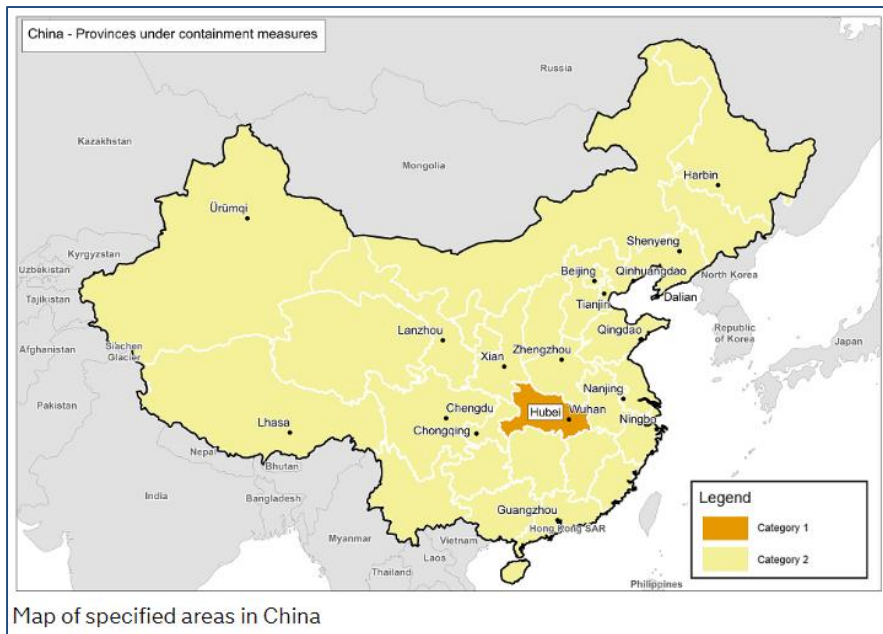
- Wuhan city and Hubei Province (China)
- Iran
- Daegu or Cheongdo (Republic of Korea)

- Any Italian town under containment measures:
 - in Lombardy:
 - Codogno, Castiglione d’Adda, Casalpuusterlengo, Fombio, Maleo, Somaglia, Bertonicco, Terranova dei Passerini, Castelgerundo and San Fiorano
 - in Veneto:
 - Vo’ Euganeo

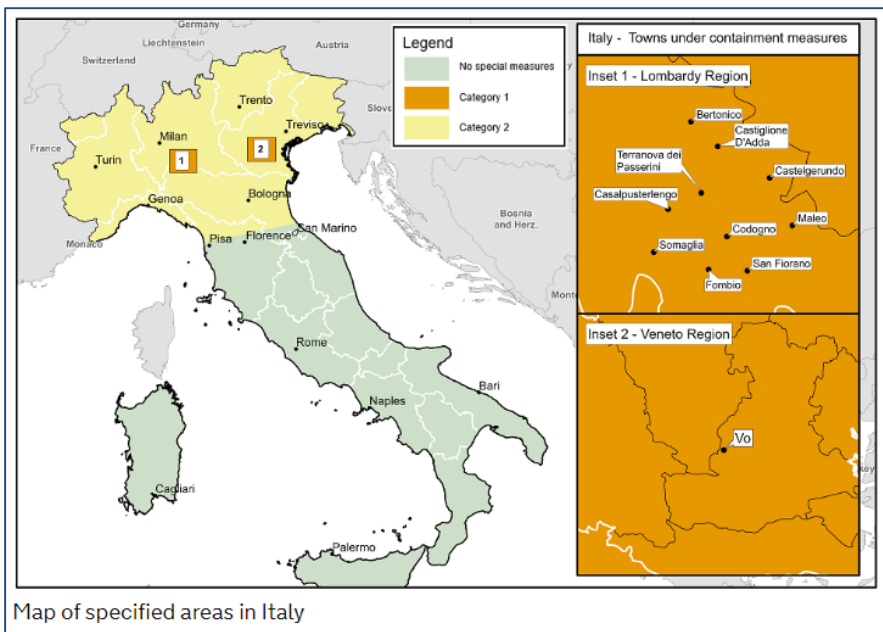
Category 2 travellers do not need to undertake any special measures, but **if** they develop symptoms listed above they should self-isolate and call NHS 111.

The locations in Category 2 are:

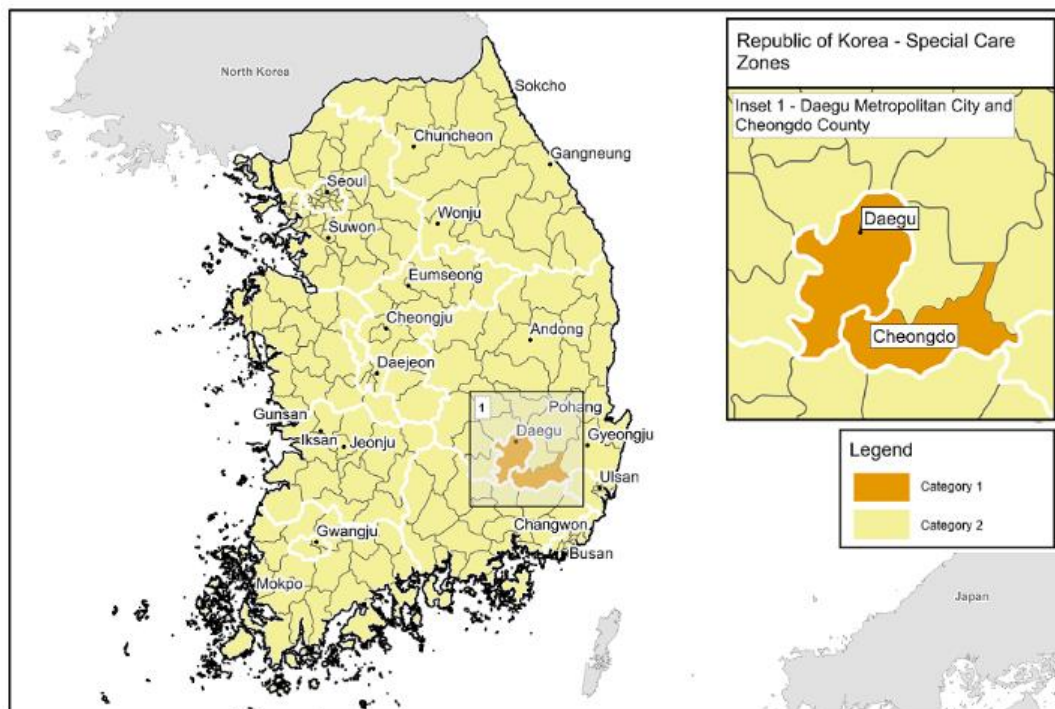
- Cambodia
- China (see map)



- Hong Kong
- Northern Italy (see map)



- Japan
- Laos
- Macau
- Malaysia
- Myanmar
- Republic of Korea (see map)



Map of specified areas in Republic of Korea

- Singapore
- Taiwan
- Thailand
- Vietnam

Preventing Spread of Infection

There is currently no vaccine to prevent COVID-19. The best way to prevent infection is to avoid being exposed to the virus.

There are general principles anyone can follow to help prevent the spread of respiratory viruses, including:

- washing your hands often - with soap and water, or using an alcohol-based hand sanitiser that contains at least 60% alcohol if handwashing facilities are not available. This is particularly important after taking public transport. We already have hand sanitisers in place in all classrooms and in the halls where lunches are eaten and our youngest children are taken to wash and dry their hands before eating.
- covering your cough or sneeze with a tissue, then throwing the tissue in a bin
- people who feel unwell should stay at home and should not attend work or any education or childcare setting
- avoid touching your eyes, nose, and mouth with unwashed hands

- avoid close contact with people who are unwell
- clean and disinfect frequently touched objects and surfaces (the school is cleaned thoroughly each morning before children and staff arrive and key areas such as toilets are cleaned multiple times during the school day)
- if you are worried about your symptoms or those of a child or colleague, please call NHS 111. Do not go directly to your GP or other healthcare environment

Important note:

From Monday, the hand sanitisers in school will be alcohol-based (60+%) and children will be required to use these at key times during the day (e.g. when entering/leaving a classroom including before and after breaks, after using the toilet, when entering the lunch hall).

Adults will monitor this to ensure that all children are using it, using a suitable amount and rubbing it in well so the alcohol has evaporated before they could put their fingers near their eyes or mouth.

We would also encourage yourselves as parents/carers to use these at the office entrances if you need to come into school.

We are aware that some parents/carers have had specific questions on the two issues below and we have included the guidance on these as follows:

What if a case of COVID-19 (pupil, student or staff) is suspected in your childcare or education setting?

If anyone has been in contact with a suspected case in a childcare or educational setting, no restrictions or special control measures are required while laboratory test results for COVID-19 are awaited.

There is no need to close the setting or send other learners or staff home.

As a precautionary measure, the NHS are currently testing a very large number of people who have travelled back from affected countries, the vast majority of whom test negative.

Therefore, until the outcome of test results is known there is no action that staff members need to take apart from cleaning specific areas and disposing of waste.

What if a case of COVID-19 (pupil, student or staff) is confirmed in your childcare or education setting?

The childcare or educational setting will be contacted by the local Public Health England Health Protection Team to discuss the case, identify people who have been in contact with them and advise on any actions or precautions that should be taken.

An assessment of each childcare or education setting will be undertaken by the Health Protection Team with relevant staff. Advice on the management of pupils or students and staff will be based on this assessment.

The Health Protection Team will also be in contact with the patient directly to advise on isolation and identifying other contacts, and will be in touch with any contacts of the patient to provide them with appropriate advice. Advice on cleaning of communal areas such as classrooms, changing rooms and toilets will be given by the Health Protection Team and is outlined later in this document.

If there is a confirmed case, a risk assessment will be undertaken by the educational establishment with advice from the local Health Protection Team.

In most cases, closure of the childcare or education setting will be unnecessary but this will be a local decision based on various factors such as establishment size and pupil mixing.

We will continue to keep you informed about any developments via Parentmail, including if the Public Health England or other government advice changes.

If you have any further questions, please feel free to contact us and keep us informed of any travel or issues that we may need to be aware of.

Yours sincerely,

Sarah Atherton
Headteacher Juniors

Mary-Lyne Latour
Headteacher Infants