

Belleville Primary School



Reception Welcome Meeting

Welcome to Reception!

Laura Britten

Assistant Head Teacher of Early Years and RB Class
Teacher

Lily Crane

RC Class Teacher

Ellie Thompson

RT Class Teacher

Katie Boyle

RKB Class Teacher

Thank you!



Early Years Foundation Stage

7 areas of learning

- **Personal, Social and Emotional Development**
- **Communication and Language**
- Physical development
- Literacy
- Mathematics
- Understanding the World
- Expressive Arts and Design

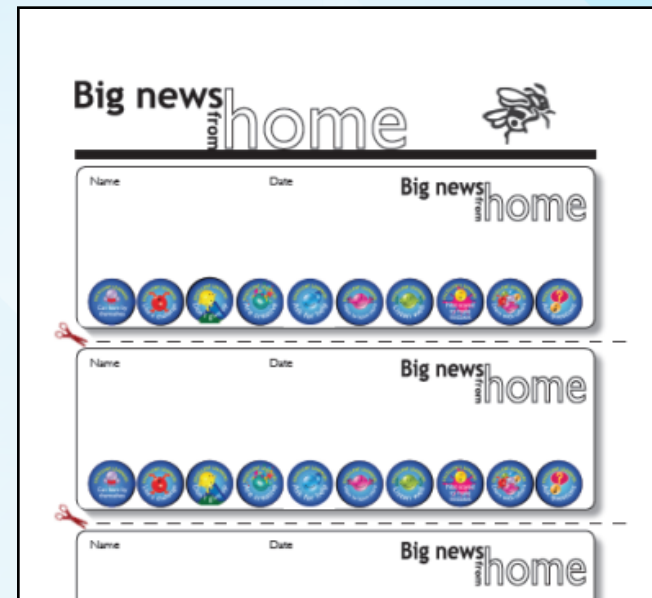
Foundation Stage Profile

- Organised in the 7 areas.
- Evidence and examples of the children's best work from each half-term.
- 2 Simple (online)



Home

- Your chance to contribute to your child's Foundation Stage Profile.
- Hand to your class teacher or nursery nurse.
- Can include photos, pictures, writing, models etc.

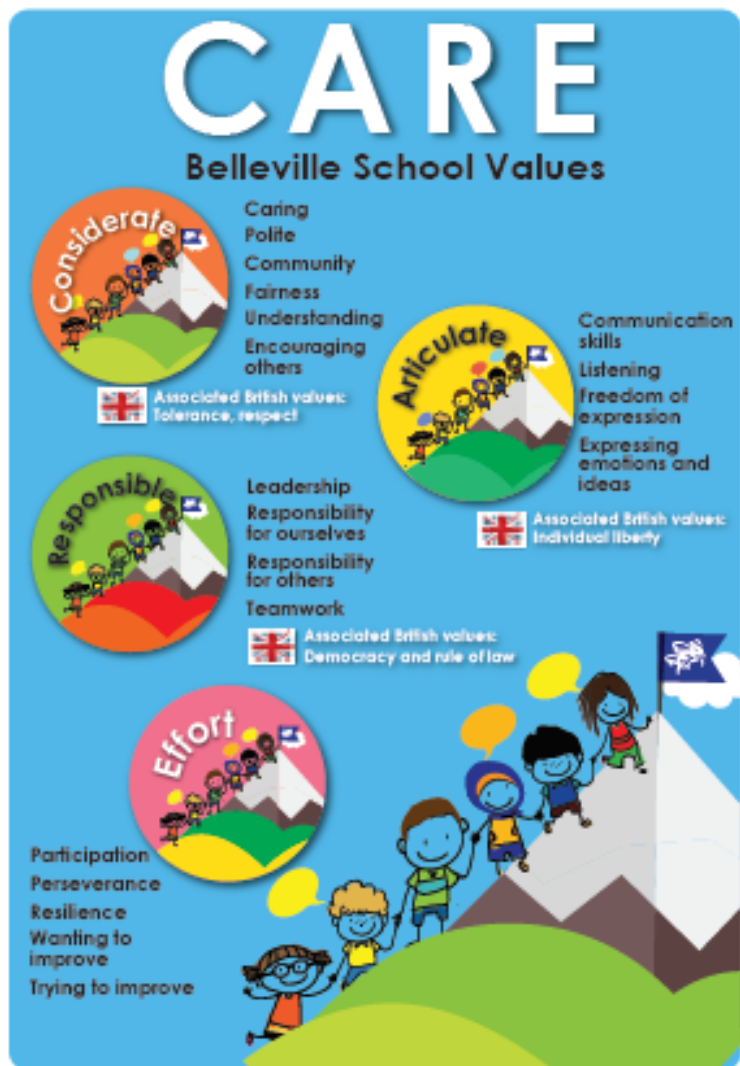


Excellent Learners



School CARE Values

- Children awarded merits by all school staff.



CARE
Belleville School Values

Considerate
Caring
Polite
Community
Fairness
Understanding
Encouraging others
Associated British values: Tolerance, respect

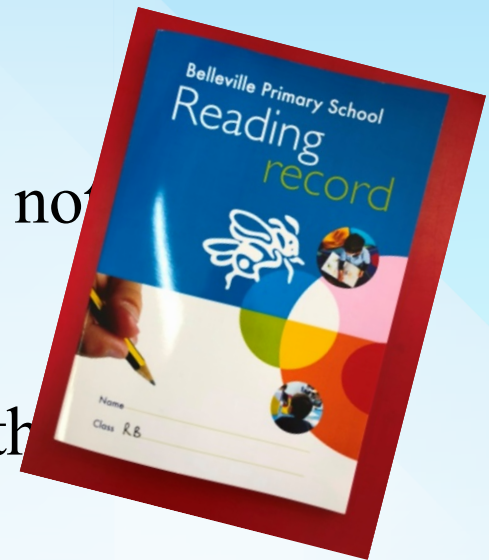
Articulate
Communication skills
Listening
Freedom of expression
Expressing emotions and ideas
Associated British values: Individual liberty

Responsible
Leadership
Responsibility for ourselves
Responsibility for others
Teamwork
Associated British values: Democracy and rule of law

Effort
Participation
Perseverance
Resilience
Wanting to improve
Trying to improve

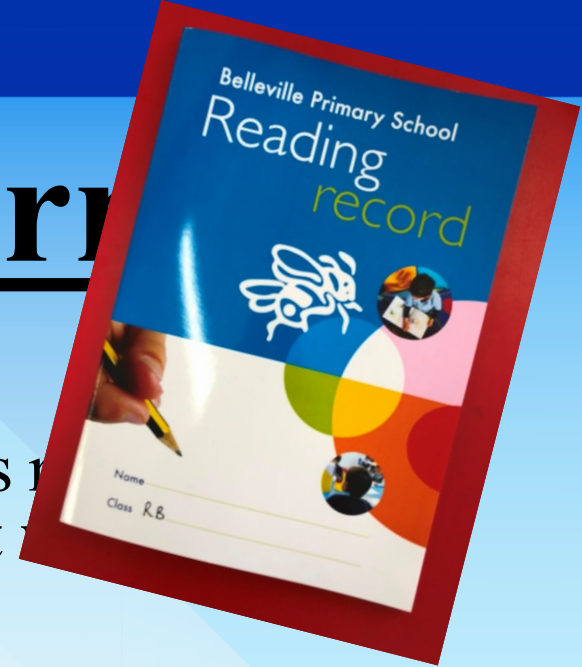
Reading Record

- Keep Reading Records and reading books in your child's book bag every day.
- Please leave reading records and books in children's book bags
- Books are changed once a week (might not be the same day each week).
- Teachers will write a comment every other week.
- Parents/carers to write a comment each week.
- Children to complete the Reading Activity each week.



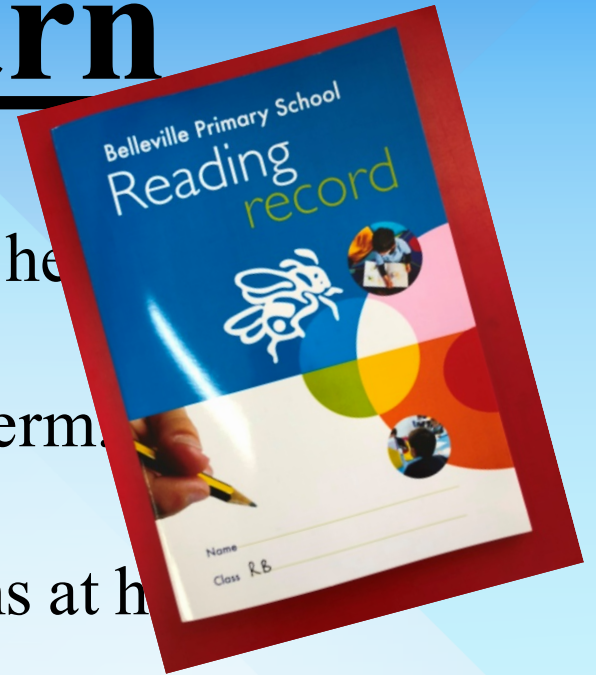
Words To Learn

- A sticker will be stuck inside your child's reading record showing the new words learnt that week.
- Common words (some of which are tricky) that children are expected to read and write by the end of Reception.
- Practise reading and writing the word independently.
- When there are no new words to learn, there will be a 'recap week' sticker.



Poems to Learn

- Half termly poems to be learnt off by heart
- Stuck on the first page of every half term.
- Children to practise reciting the poems at home
- Encourages a love of literacy and understanding of different text types.
- Continues throughout the school.



My Little Sound Book

- Sent home every Friday containing the sounds, actions and songs learnt that week.
- Practise singing, doing the actions and making the sounds.
- Practice forming the letters correctly

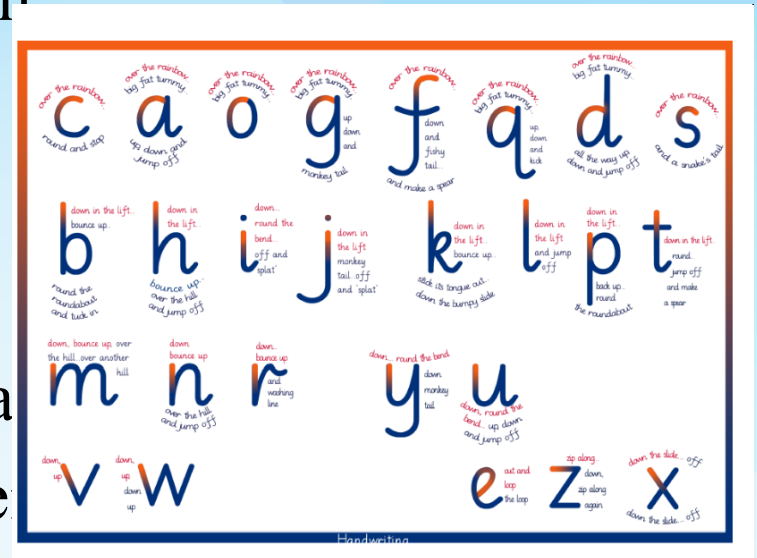


Reading, Writing and Maths Workshops

- Workshops for parents to explain how these subjects are taught at school
- Ways in which you can support your children's learning at home
- More information will be sent via a letter soon

Letter and Number Formation

- We use rhymes to help children form the letters and numbers correctly.
- Try to encourage correct formation of one or two letters and numbers at a time.



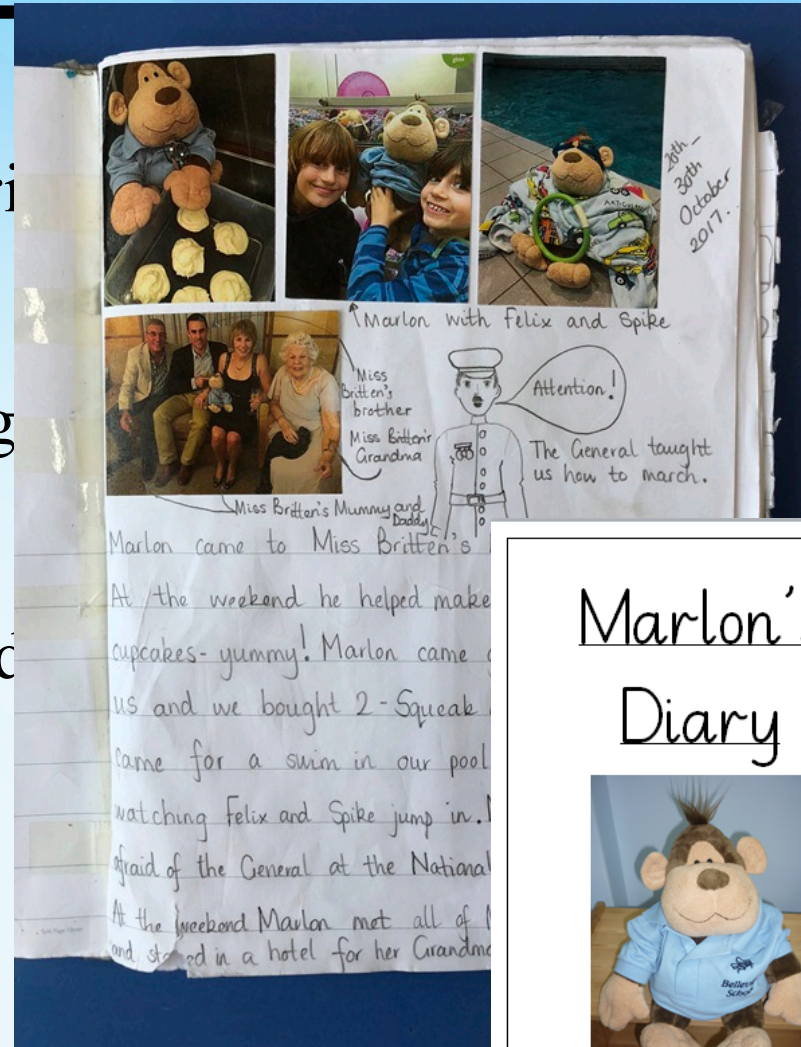
Star Box

- Our way of allowing children to ‘show and tell’.
- One child per week will be given the box to fill at home.
- Return on Monday to share with the class.



Class Bear

- To encourage children to write and draw at home.
- One child per week will be given a bear and their diary to take home.
- Bring back on the designated day and share with the class.



Marlon's Diary



Achievement assembly

- Held every Friday with Years 1 and 2.
- Children from each class awarded ‘Star of the Week’.
- Gold, silver and bronze awards for attendance.

Snacks and lunchtimes

- Fruit/vegetables, milk and water are available for 'Fruit and Milk' time and throughout the day in the classroom.
- We are a nut free school.



Mrs Sophie Reynolds

- An experienced reception teacher who works across Reception.
- RKB – Monday morning
- RC - Monday afternoon
- RT - Tuesday morning
- RB – Tuesday afternoon
- when teachers have



Parent helpers

- Please let your class reps know if you would like to help in class after half term.
- We would love regular helpers to support children and help with organisation in the classroom.
- Parent helpers must report to the school office and collect a visitors pass. You will be given a yellow pass if you have a DBS check and a red pass if you do not.
- Parent helpers can also support school trips.

We would love...

- Junk modelling materials (boxes, tubes, bottles etc – **no nut packaging please**).
- Old dressing up clothes.
- Large pieces of fabric.
- Playdough rota.
- Children to wear clothes that they can easily change in and out of (please encourage children to dress independently at home).

Reminders

- Check book bags daily.
- Name ALL clothes, including book bags.
- Come in with their PE bag (Wednesday – RKB, Friday – RB & RT, Thursday – RC,).
- School starts at 9.10am (staff outside at 9.05am).
- School finishes at 3.30pm, Reception children outside from 3:25pm.
- Please say goodbye to your children in the playground and refrain from coming into school.

Reminders

- Children to leave toys and cuddly animals at home (they will have the chance to bring them in with star box).
- Give important letters directly to the office (teacher/nursery nurse).
- We are always happy to answer any questions you may have before or after school.
- Vicki Brand – Assistant Head Teacher of Inclusion (SEN)
- Mary-Lyne Latour – Head of Infants



Thank
you!